



## To Register:

In Person: 4520 California Rd  
Orchard Park, NY 14127

Phone: (716)662-6450 Ext 1

Online: [www.oprec.org](http://www.oprec.org)  
(10% discount)

Online and phone reservations must be paid with Credit Card (MasterCard, Visa, Discover- non refundable service fee with every online registration)

ALL Staff are CPR, First Aid and AED Certified

\*Campers are responsible for bringing their lunch, snacks and water bottle daily.

For payment plans and financial assistance information email [welchk@orchardparkny.org](mailto:welchk@orchardparkny.org)

## Bussing/Field Trips

- Field Trips are subject to change based on weather, availability.
- The bus ride on Mondays and Fridays from the Activity Center to the OP Middle School Pool will take approx. 8 min. one way. We will be swimming weeks 2-8 only.
- Please check the website [www.oprec.org](http://www.oprec.org) for complete field trip details including which weeks are on site or off site.

2025

# Summer Camps

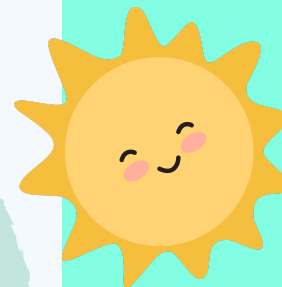
Voted #1 in the Southtowns

Ages 3-14 Girls & Boys  
Registration opens  
February 1st for residents;  
February 15th for non residents.

Online - 12:01 am  
[www.oprec.org](http://www.oprec.org)

Register before May 1st

Early Bird Pricing  
2/1-4/30 - Don't Delay!  
plus  
10% program discount online



## Please Note:

- For campers with special medical or behavioral needs, camp registration must be completed by May 1st AND you must speak with the Director about your child's needs prior to that time.
- Campers must be picked up by the specific program's end time as late pickups have a negative financial impact on the department. Campers who are picked up late will be charged \$1 per minute past the designated pick up time. Payment is due upon camper pickup.
- All field trips are subject to change.



"A Passion for Excellence"

• OPREC

# Day Camp

Ages 4-10

What are we going to do?

Join our wonderful staff for activities including...

STEAM

Teambuilding

Field Trips

Swim

Games

Water Slides

Playground

Nature Hikes

Arts & Crafts

Create Memories

Sports

Dance

1

Week 1 - June 30-July 3  
Theme: Let's Go Buffalo  
Field Trip: Bill's Tour, Emery Park

2

Week 2 - July 7-July 11  
Theme: Rock Star  
Field Trip: Evangola, Penn Dixie

3

Week 3 - July 14-July 18  
Theme: Wild West  
Field Trip: Power Vista, Orchard Park Library, Striker's Bowling

4

Week 4 - July 21-July 25  
Theme: Wild & Wacky  
Field Trip: Old Fort Niagara, Inflatable Obstacle Course

5

Week 5 - July 28-Aug 1  
Theme: Sports Galore  
Field Trip: Get Air! Bison's Baseball Game

6

Week 6 - Aug 4-Aug 8  
Theme: Disco Mania  
Field Trip: South Towns Tennis, Kelkenberg Farms, Dance Party

7

Week 7 - Aug 11-Aug 15  
Theme: Camp Olympics  
Field Trip: Explore Buffalo, Chestnut Ridge

8

Week 8 - Aug 18-Aug 22  
Theme: Tour de Playgrounds  
Field Trip: Hamburg Village Pool, Playgrounds (Shortened Hours, Limited Participants)

Cost: \$395 before May 1st; \$415 as of May 1st

Teal*	Ages 4-5
Blue	Ages 5-6
Copper	Ages 5-6
Purple	Ages 6-7
Red	Ages 7-8
Orange	Ages 7-8
Yellow	Ages 8-9
Green	Ages 9-10

- Teal Group must be entering Kindergarten in the Fall.



NYS  
Department of Health  
Certified!

Where: Community Activity Center  
4600 California Rd, OP NY 14127

Time: Camp hours are 9am-4pm,  
Monday-Friday

Free extended hours run:  
7:30am-9am & 4-5:30pm

Cost: \$395 before May 1st;  
\$415 as of May 1st  
(Week 1 - \$316 before May 1st;  
\$332 as of May 1st)

Camper to Staff Ratios:

6:1 (Teal, Blue, Copper, Purple)  
8:1 (Yellow, Red, Orange)  
10:1 (Green)

Two field trips per week either onsite or offsite. Check website [www.oprec.org](http://www.oprec.org) for full field trip details. Field trips are subject to change.

On Mondays and Fridays we will bus campers to the OP Middle School Pool for swimming and to enjoy Green Lake Yates Park. (weeks 2-8 only)



# Adventure Camp

**Ages 11-14**

Week 1 - June 30-July 3  
Field Trip: Buffalo Bill's Tour,  
Sprague Brook Park

Week 2 - July 7-July 11  
Field Trip: Emery Park,  
KC Fitness

Week 3 - July 14-July 18  
Field Trip: Evangola State Park,  
Water Slide, Buffalo Naval Park

Week 4 - July 21-July 25  
Field Trip: Explore Buffalo,  
Orchard Park Library Murder  
Mystery, Strikers Bowling Alley

Week 5 - July 28-Aug 1  
Field Trip: Chestnut Ridge  
Park, Buffalo Bison's Game

Week 6 - Aug 4-Aug 8  
Field Trip: SouthTowns Tennis,  
Woodlawn Beach, Bounce  
Obstacle Course

Week 7 - Aug 11-Aug 15  
Field Trip - Beaver Island Park,  
Upbeet Cooking

**10:1 camper to Staff Ratio**

## NYS Department of Health Certified Program

5 days a week with two field  
trips each week! Weekly  
activities include tennis,  
archery, sports, swimming,  
boating, arts & crafts.

Where: Recreation Building at Green  
Lake/Yates Park (200 N. Lake Dr.)

Time: Monday-Friday, 9:00am-4:00PM  
FREE extended hours run:  
7:30am-9am and 4:00pm-5:30pm

Cost: \$395 per week BEFORE May 1st

\$415 per week AS OF May 1st

Cost: \$316 per week BEFORE 5/1 (week 1)

\$332 per week AS OF 5/1 (week 1)

## Now Hiring Summer Staff!

Must be:

- 15 yrs.+ for lifeguards
- 16 yrs. + for instructors and counselors
- 18 yrs.+ for leadership positions

If interested, please contact Kristin Welch  
at [welchk@orchardparkny.org](mailto:welchk@orchardparkny.org)

We will be offering two locations for Mini  
Camp at our wonderful neighborhood  
playgrounds! Register for M/W or T/Th or  
both! In case of inclement weather we will  
shift into the OP Middle School using the  
main entrance. Parents would be notified  
via text.

## Neighborhood Mini Camps

**Ages 5-10**

## Orchard Meadows

located on Old Orchard Lane

## Pawtucket

located on Pawtucket Rd

Each week is themed: Arts and crafts, water  
play, nature exploration, playground fun,  
camp games and more!

**Monday/Wednesday - 8:30am-12:30pm**

Session A: 6/30-7/16 \$275 before 5/1; \$295 as of 5/1

Session B: 7/21-8/13 \$360 before 5/1; \$380 as of 5/1

**Tuesday/Thursday - 8:30am-12:30pm**

Session C: 7/1-7/17 \$275 before 5/1; \$295 as of 5/1

Session D: 7/22-8/14 \$360 before 5/1; \$380 as of 5/1

(Session A & C - 6 days; Sessions B & D - 8 days)

**Camper to Staff Ratio**

- 6:1 ages 5-7
- 8:1 ages 7-10





**Ages 3-5**

# PRESCHOOL PLAY

Must be 100% independent with their bathroom needs.

Come explore daily themes such as: Magic of Camp, Let's Go Buffalo, Rock Star, Wild West, Wild & Wacky, Sports Galore, Disco Mania, Camp Olympics  
M/W content is repeated T/Th.

## Mornings

at the Activity Center

**Monday/Wednesday - 8:45am-12:15pm**


Session A: Class 1 and Class 2 (6/30-7/16) \*\$275/\$295\*

Session B: Class 1 and Class 2 (7/21-8/13) \*\$360/\$380\*

**Tuesday/Thursday - 8:45am-12:15pm**

Session C: Class 1 and Class 2 (7/1-7/17) \*\$275/\$295\*

Session D: Class 1 and Class 2 (7/22-8/14) \*\$360/\$380\*



Each week is themed: Campers participate in arts and crafts, water play, nature exploration, playground fun, camp games and more!

**6:1 camper to Staff Ratio**



## Fun Friday

**At the Activity Center - 9:30am-12:30pm**

Dates: 6/27 - 8/8 (no class 7/4)

Cost: \*\$275/\$295\*

**At Orchard Meadows Playground - 9:30am-12:30pm**

Dates: 6/27 - 8/8 (no class 7/4)

Cost: \*\$360/\$380\*

**\*Price before 5/1; price as of 5/1\***



Runner's Roost

# Sports Camp

Ages 5-12

We focus on fundamentals, skills and drills, sportsmanship, and having fun!



# Eco Adventure Camp

Ages 5-11

Camp

Join us for an adventure like no other! Led by the amazing staff of Earth Spirit, each day the camp will take place at a new location within OP. Parents are responsible for dropping off and picking up at each site. New Activities for 2025!

Week 1: (Ages 5-7) July 7-11 8:30-11:30am  
Cost: \$225 before 5/1, \$250 as of 5/1

Week 2: (Ages 8-11) August 11-15 8:30-11:30am  
Cost: \$225 before 5/1, \$250 as of 5/1

Location Schedule for week 1  
Day 1: Green Lake/Yates Park  
Day 2: Chestnut Ridge Park  
Day 3: Honeycrest Playground  
Day 4: Chestnut Ridge Park  
Day 5: Pawtucket Playground

Location Schedule for week 2  
Day 1: Chestnut Ridge Park  
Day 2: JP Nicely Park  
Day 3: Chestnut Ridge Park  
Day 4: Birdsong Park  
Day 5: JP Nicely Park



\*\*6/30-7/3\*\*

7/7-7/11

7/14-7/18

7/21-7/25

7/28-8/1

8/4-8/8

8/11-8/15

8/18-8/22

Week 1: Flag Football  
Week 2: Floor Hockey  
Week 3: Sports Galore  
Week 4: Flag Football  
Week 5: Track & Field/  
Sports Galore

Week 6: Lacrosse  
Week 7: Basketball  
Week 8: Soccer

# Performing Arts

Ages 7-14



Ages 7-10 Mon/Wed Dates: 6/30-8/6  
Time: 9:30am-12:30pm 10:1 Camper to Staff Ratio  
Cost: \$295 per person before 5/1, \$315 as of 5/1

Ages 11-14 Tues/Thurs Dates: 7/1-8/7  
Time: 9:30am-12:30pm 10:1 Camper to Staff Ratio  
Cost: \$295 per person before 5/1, \$315 as of 5/1

This program is for youth who have a general interest in the performing arts. Students will design and act in plays, learn and create basic scenery, learn new acting techniques and enjoy theater games! Participants will give a final performance on the last day of the program. Program is located at OP Middle School Auditorium.

# Culinary Camp

Ages 8-13

Time: 3-6pm  
Location: Community Activity Center  
Cost: \$295 before 5/1, \$315 as of 5/1

Week 1: 7/14-7/18/25  
Week 2: 7/28-8/1/25

Fine tune your culinary skills by creating fun and tasty items. Each day will be fun, different, and filled with sampling! 10:1 Camper to Staff Ratio



Lawley

INSURANCE | EMPLOYEE BENEFITS



MOLDENHAUER ASSOCIATES

## After School Program

✓ The answer to your After School needs! Kids bussed over from OP elementary schools for some structured, safe, fun activities!

✓ Registration opens Feb 1st for current participants.

✓ Registration opens Feb 15th for anyone new to our After School Program

✓ Space is limited, register with a \$22 deposit.

- If your child attends any of the four Elementary Schools or the Middle School in Orchard Park, the school district will bus them to the Activity Center for the program.
- For complete details or to register go to [www.oprec.org](http://www.oprec.org)
- OPREC After School Program - Monday through Friday, 3:15pm-6:00pm September through June.
- Follows the OP School calendar (K-6)
- \$22 per day per child for 25/26 school year.

## Now Hiring Summer Staff!

Must be:

- 15 yrs.+ for Lifeguards / Swim Instructors
- 16 yrs. + for Sports + Youth / Program Counselor
- 17 yrs. + for Camp Counselors
- 18 yrs.+ for Leadership Positions

If interested, please contact Kristin Welch at [welchk@orchardparkny.org](mailto:welchk@orchardparkny.org)



## OUR CORPORATE PARTNERS!



**CAPPELLI'S**  
PIZZERIA



Join the OP Rec Team as a Corporate Sponsor today...

Call Kristin Welch at

662-6450 for more details.



Thank you to our Corporate Partners for supporting our campers and programs throughout the years.

Please support our Partners who support you!