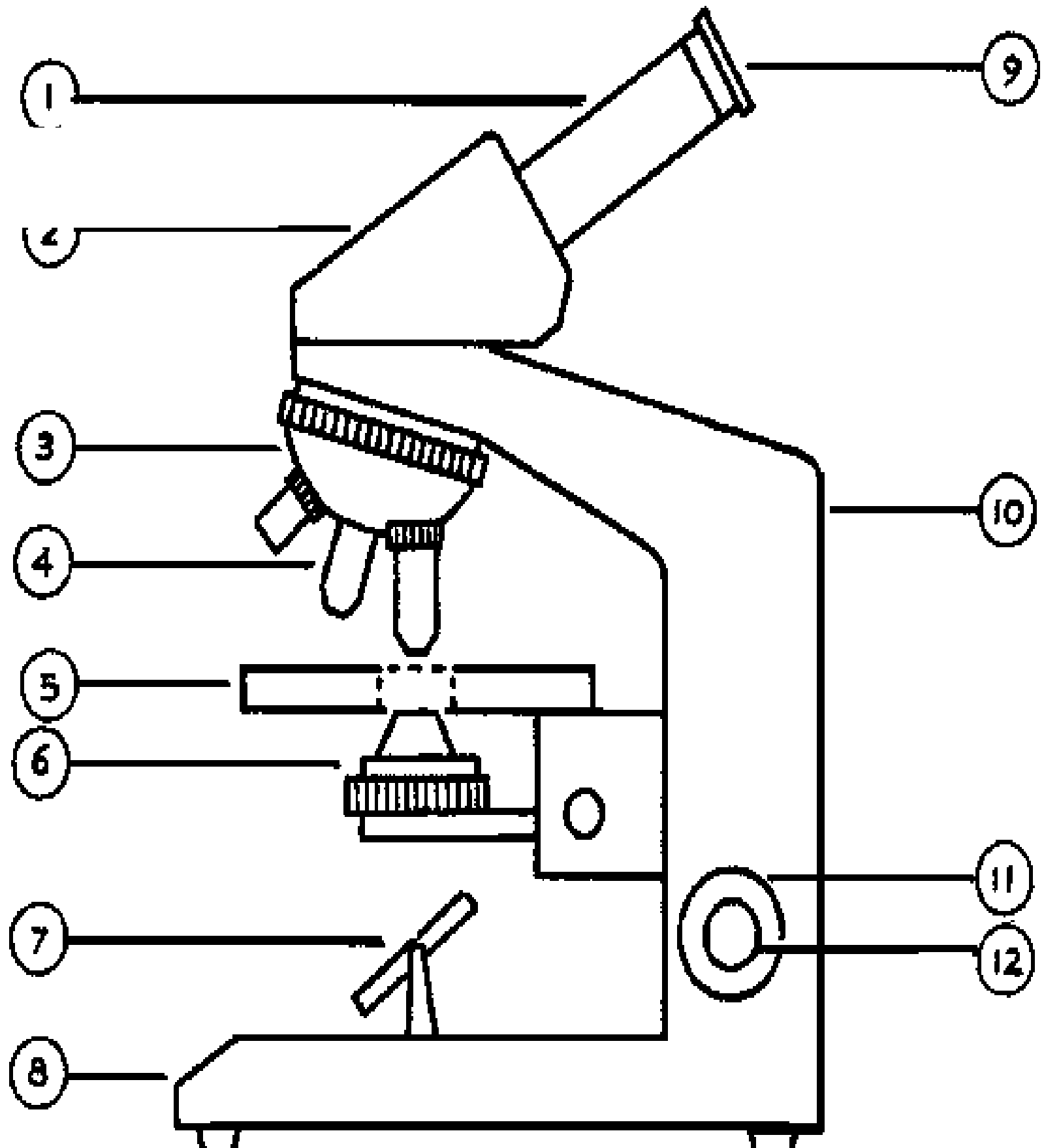


# Parts of a Microscope

## STUDY GUIDE



WORD BANK (Use for BOTH the labeling of the microscope as well as the fill-in the blank questions)

Eyepiece

Body tube

Objectives

Nosepiece

Stage

Diaphragm

Light Source

Base

Spring (Stage) Clips

Arm

Fine Adjustment Knob

Coarse Adjustment Knob

- 1.) \_\_\_\_\_ Allows for precise focusing of the specimen
- 2.) \_\_\_\_\_ Provides light
- 3.) \_\_\_\_\_ Holds the objective lenses
- 4.) \_\_\_\_\_ Regulates the amount of light reaching the objective lens.
- 5.) \_\_\_\_\_ The lens you look through, it magnifies the specimen
- 6.) \_\_\_\_\_ moves the body tube or stage up and down (used to focus first).
- 7.) \_\_\_\_\_ Supports the upper parts of the microscope
- 8.) \_\_\_\_\_ magnifies the specimen, 4x, 10x, 40x
- 9.) \_\_\_\_\_ Where the slide is placed and held by the stage clips.
- 10.) \_\_\_\_\_ Supports the microscope
- 11.) \_\_\_\_\_ Hold the slide in place on the stage.
- 12.) \_\_\_\_\_ Supports the eyepiece and objectives